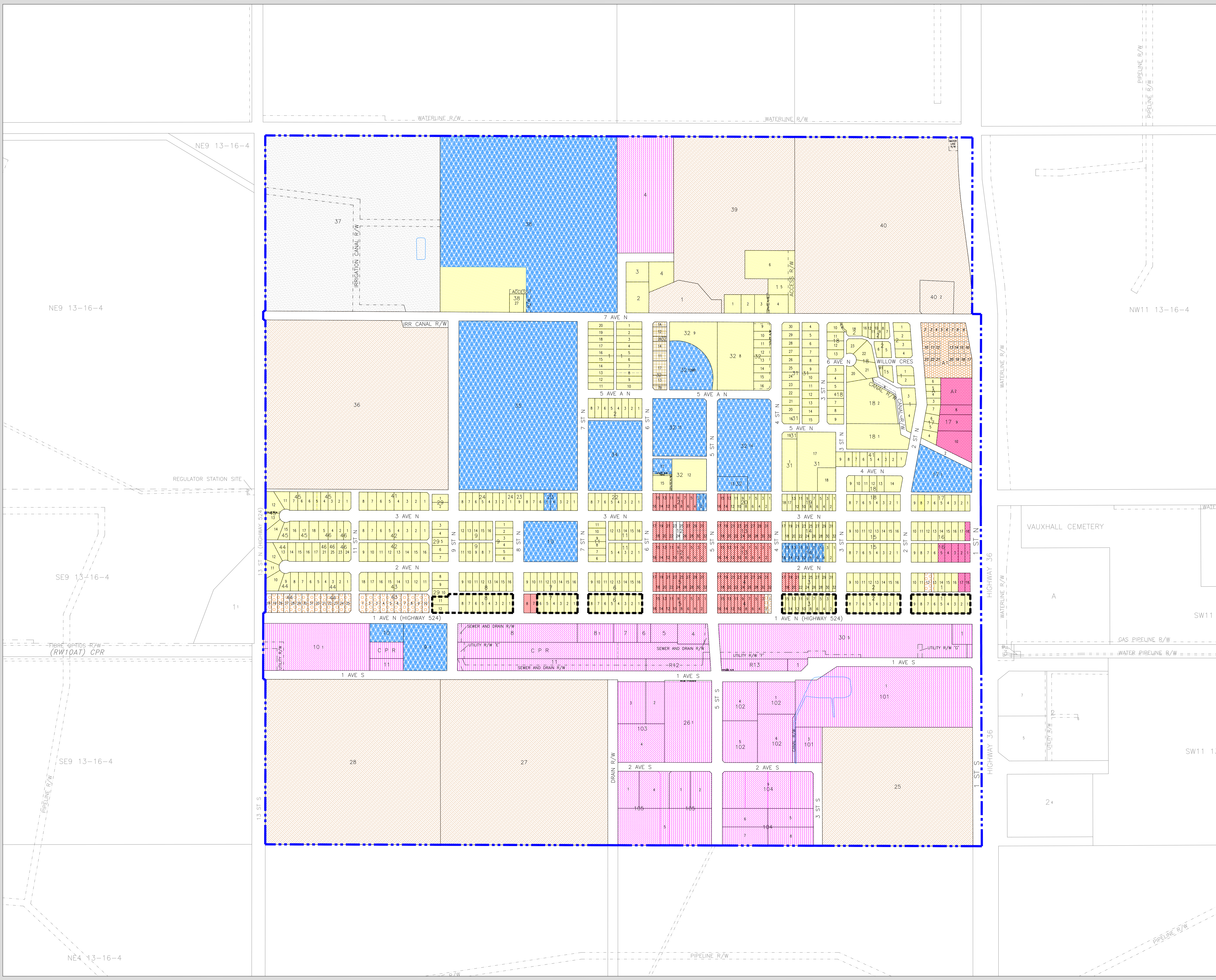


TOWN OF VAUXHALL  
 All Of Sec 12 In  
 Twp 13, Rge 16, W 4 M  
 LAND USE DISTRICT MAP

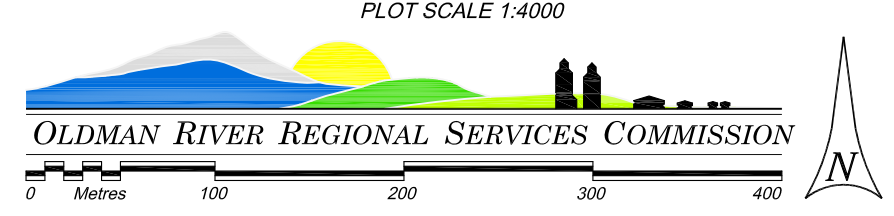
LAND USE DISTRICTS  
 Bylaw: 833-09, Date: April 20, 2009  
 (Amended To And Including Bylaw 987-22)

- |  |                               |     |
|--|-------------------------------|-----|
|  | Residential                   | R   |
|  | Residential Small Lot         | R-1 |
|  | Residential Manufactured Home | RMH |
|  | Manufactured Home Park        | MHP |
|  | Retail Commercial             | RC  |
|  | Highway Commercial            | HC  |
|  | Industrial                    | I   |
|  | Public And Institutional      | PI  |
|  | Urban Reserve                 | UR  |
|  | Direct Control                | DC  |
|  | 1st Avenue North Overlay Area | OA  |

Town Boundary



MAP PREPARED BY:  
 Oldman River Regional Services Commission  
 3185 16th Avenue North, Lethbridge, Alberta T1H 5E8  
 TEL: 403-329-1244  
 "NOT RESPONSIBLE FOR ERRORS OR OMISSIONS"



August 29, 2022 N:\Taber-Municipal-District\Vauxhall\Vauxhall LUD & Land Use Redesignations\ Vauxhall LUB 833-09 April 2009 (Map amended to bylaw 970-20).dwg